

WEEKLY NEWSLETTER

ST ANTHONY'S CATHOLIC PRIMARY SCHOOL

WE ARE GOD'S WORK OF ART



ISSUE 16 | SPRING 2025 | SCHOOL NUMBER 01772 726621 |

STAR OF THE WEEK AWARDS

FRIDAY, 10TH JANUARY, 2025

Rec S	<i>Shayaan S</i>			Rec T	<i>Beatrice P</i>
1/2S	<i>Noah M</i>	1/2T	<i>Carmen T</i>	1/2A	<i>Daphne P</i>
3S	<i>Lucca F</i>	3/4T	<i>Jude J</i>	4A	<i>Ellie D</i>
5S	<i>Jack F</i>	5/6T	<i>Dillan W</i>	6A	<i>Orla-Rose McL</i>

office@st-anthonys.lancs.sch.uk

SCHOOL DAY

School starts at 8.45am with doors opening from 8.40am

All children must be in class for 8.45am prompt in readiness for morning registration

School finishes at 3.15pm

SCHOOL MEALS

Week commencing 13th January will be week 1 of the Autumn/Winter Menu

Key stage 2 school meals are now charged at £2.70 per day for paying parents

Happy New Year!

We have had a cold week, but it has been lovely being back in school with the children and hearing all about their Christmas activities.

This morning we celebrated a whole school Mass in church; the children were a credit with beautiful singing and excellent behaviour. Next week we resume our class Mass and class assembly rota; on Tuesday, Mrs. Boardman's Class will lead the assembly in the school hall and on Wednesday, Mrs. Eshborn's Class will go to church for their class Mass – parents and grandparents are welcome at both.

Just a reminder that children should attend school wearing their school uniform (unless they have Forest School), we are now changing for PE in school.

Have a lovely weekend – hopefully the weather will warm up!

Mrs. Barnes

Year 5/6 Ancient Greece Workshop

On Wednesday, our Year 5/6 children went thousands of years into the past into Ancient Greece as they enjoyed a visit from 'The Makers of History' Team. The workshop involved lots of hands on activities learning about life in Sparta and Athens and the fascinating mythology associated with this wondrous ancient civilisation.



School Led Before and After School Extra-curricular Clubs

Our school led before and after school extra-curricular clubs will resume on Monday, 13th January. Unless you hear differently, please assume that your child has been accepted into the clubs of their choice as per your groupcall club expression of interest response. Please can we request that you inform the school office when your child is unable to attend a club for any reason or if there are any changes to pick up arrangements. Staff run all our clubs voluntarily in their own time and there may be occasions when we have to cancel a club at short notice due to staff personal commitments or absence. We will always try to give you as much notice as possible.

REMINDER - Upcoming closing date for September 2025

Primary School Application Process

The closing date for September 2025 primary school application process is next **Wednesday, 15th January**. Applications must be completed online at www.lancashire.gov.uk Please can we remind you, if your child is baptised Catholic; you will also need to complete the supplementary form which is available from the school office. This form must be returned to school by the application closing date along with a copy of your child's baptism certificate.



Dates for your diary

~~Y5/6 Greek History Day – Wednesday, 8th January~~

~~Whole School Mass – Friday, 10th January – 9.15am~~

~~Extra-curricular clubs begin – Monday, 13th January~~

~~Y5S Class Assembly – Tuesday, 14th January – 9.05am~~

~~Y5/6 Crucial Crew visit at UCLAN~~

~~Y3S Class Mass – Wednesday, 15th January – 9.15am~~

~~Y3/4T Class Assembly – Tuesday, 21st January – 9.05am~~

~~Y5/6T Class Mass – Wednesday, 22nd January – 9.15am~~

~~Y1/2S Class Mass – Wednesday, 29th January – 9.15am~~

~~Y1/2T Class Assembly – Thursday, 30th January – 9.05am~~

~~RecS & RecT Class Assembly – Tuesday, 4th February – 9.05am~~

~~Y6A Class Mass – Wednesday, 5th February – 9.15am~~

~~St. Anthony's (has) Got Talent – Friday, 7th February – 6.00pm~~

~~Y4A Class Assembly – Tuesday, 11th February – 9.05am~~

~~Y1/2A Class Mass – Wednesday, 12th February – 9.15am~~

~~Half Term – Monday, 17th February – Friday, 21st February~~

~~Y5S Class Mass – Wednesday, 26th February – 9.15am~~

~~Y5/6T Class Assembly – Tuesday, 4th March – 9.05am~~

~~Whole School Mass (Ash Wednesday) – 5th March – 9.15am~~

~~World Book Day (Dressing-up) – Thursday, 6th March~~

~~Y1/2S Class Assembly – Tuesday, 11th March – 9.05am~~

~~Y3/4 Class Mass – Wednesday, 12th March – 9.15am~~

~~Y6A Class Assembly – Tuesday, 18th March – 9.05am~~

~~Y1/2T Class Mass – Wednesday, 19th March – 9.15am~~

~~Y3S Class Assembly – Tuesday, 25th March – 9.05am~~

~~Y4A Class Mass – Wednesday, 26th March – 9.15am~~

~~Y1/2A Class Assembly – Tuesday, 1st April – 9.05am~~

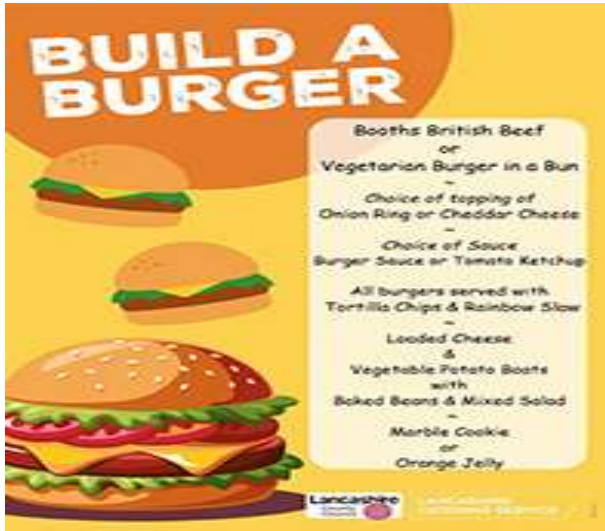
~~RecS & RecT Class Mass – Wednesday, 2nd April – 9.15am~~

~~Easter Reflection (whole School) - Thursday, 10th April~~

~~Close for Easter – Friday, 11th April at 1.30pm~~

Build a Burger Themed Day

We are having the following special themed lunch next Thursday, 16th January.



There will also be the Pasta and Jacket Potato options available. There is no need to book in advance, just let class know on the day and make the necessary £2.70 lunch payment through your child’s parent pay account if relevant.

Advance Notice - May 2025 Year 6 Statutory Assessments

This year’s Year 6 statutory assessments will take place from Monday, 12th May to Thursday, 15th May inclusive. Please can we request that you avoid taking your child out of school on the lead up or during the assessment window. Thank you for your co-operation.

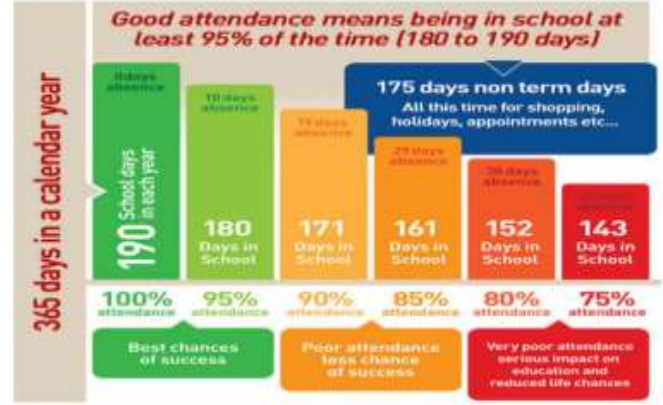
Advance notice – June 2025 Phonics Screening

Children in Year 1 will undertake their statutory phonics screening the week beginning 9th June.

Please can we request that you avoid taking your child out of school during the assessment window. Thank you for your co-operation.

Wearing of Earrings

Please can we remind you, EYFS and KS1 children are not allowed to wear earrings in school. KS2 (Years 3-6) children may wear one pair of singular plain gold/silver stud earrings but, for safety reasons, these must be removed for PE lessons. If KS2 children are unable to remove earrings, they should come to school with them covered with a sufficient amount of tape to prevent the piercing penetrating.



Did you know? A two week holiday in term time means the highest attendance you can achieve is 94.7%.

Class	% Attendance
Rec S	88.7%
Rec T	90.5%
1/2S	96.7%
1/2T	95.5%
1/2A	93.3%
3S	95.5%
3/4T	93.7%
4A	97.4%
5S	91.3%
5/6T	94.5%
6A	95.2%
Whole School	94.0%
Whole School Target	96.0%

Attendance Winners - A huge well done to class 4A who have achieved 97.4% attendance this week.

Punctuality – Registration is at 8.45am prompt and when a child arrives in class after 8.45am they receive a late mark. Arriving on time is important, being late means that children miss the start of lessons, which means lost learning.



No Lates – Unfortunately, all of our classes have had lates this week.

Attendance Reminder

Please can we remind you, if your child is going to be absent from school due to illness, it is essential that you contact the school office before the start of each school day. Unless we hear from you, your child’s absence will be recorded as unauthorised. Any holidays taken during term time will always be unauthorised unless there are exceptional circumstances. Penalty notices may be issued for absences of five days and over.

Update to Pupil Contact Details

As you are aware, our main line of communication with yourselves is either over the phone or through electronic messaging. It is, therefore, imperative that you contact the school office when there are any changes to your child's contact details/emergency contacts.

Outstanding Parent Pay Accounts

Please can everyone check their child's parent pay account and clear any outstanding balances for school meals if relevant. Please can we remind you, all meals **MUST BE** paid for in advance/on the day at the latest.

FTW Campaign: 'Be the Change – Save the Change'



Our 'Be the Change – Save the Change' campaign continues this term and we hope that you can continue donating your loose change.



Exciting News – St Anthony's (has) Got Talent is returning – More information will follow



TERM DATES

SEPTEMBER 2025 - JULY 2026

St Anthony's Catholic Primary School

AUTUMN TERM 2025

INSET DAYS	Monday 1st September 2025
RE-OPEN	Tuesday 2nd September 2025
MID-TERM CLOSURE	Monday 27th October to Friday 31st October 2025
INSET DAY	Monday 3rd November 2025
CLOSURE FOR CHRISTMAS	Friday 19th December 2025 at 1.30pm



SPRING TERM 2026

RE-OPEN	Monday 30th January 2026
MID-TERM CLOSURE	Monday 16th February to Friday 20th February 2026
CLOSURE FOR EASTER	Thursday 2nd April 2026 at 1.30pm



SUMMER TERM 2026

RE-OPEN	Monday 20th April 2026
BANK HOLIDAY	Monday 4th May 2026
MID-TERM CLOSURE	Monday 25th May 2026 to Friday 29th May 2026
INSET DAY	Monday 1st June 2026
CLOSURE FOR SUMMER	Friday 17th July 2026 at 1.30pm



**LANCASHIRE
WOMEN**

Steps to Confidence Course

3 weeks course

Starting

Monday 27th January 2025

1-2:30pm

Preston West Family Hub

Ashton Primary School Site, Ainsdale Drive,

Preston, PR2 1TU

Telephone: 01772 536419



- Take steps to understand and build on your confidence.
- Want to set some goals, build your resilience
- Plan for 2025, being your positive year.
- Receive a £20 supermarket shopping voucher upon completion.

To Book a Place please call the group
organisers

Susan on 07878101134

or

Jo on 07488706362

PRESTON WEST
**FAMILY
HUB**
PRESTON



ONE STOP SHOP

Preston West

This is a
Warm and Welcome
Session

Come along and enjoy a hot
Drink and bite to eat.

Monthly Drop In -

Families can access free advice & support

Community Gateway

Citizen Advice

Employment advice - DWP

Relationship advice

Runshaw College Apprenticeships

Community Education Sexual Health

Debt Advice/Support

Free Funded Nursery Places

School Nurse team

No
Appointment
Needed

Second
Thursday of
the month,
2pm - 4pm



Lancashire
County
Council

Preston West Family Hub

Ashton Primary School Site, Ainsdale Drive,

Preston, PR2 1TU

Telephone: 01772 536419

PRESTON WEST
**FAMILY
HUB**
PRESTON

